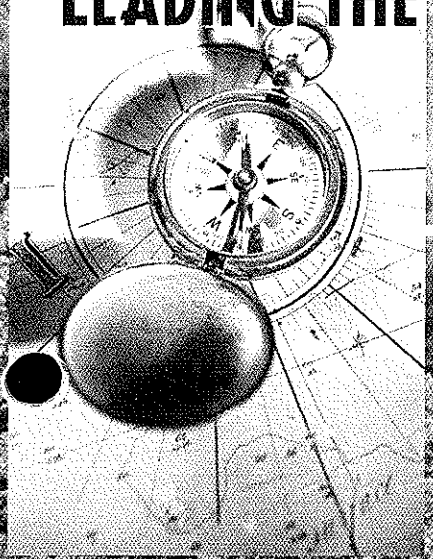


8/99

# ULTRA 2000



LEADING THE WAY THROUGH INNOVATION AND VALUE



# ULTRA SUPREME

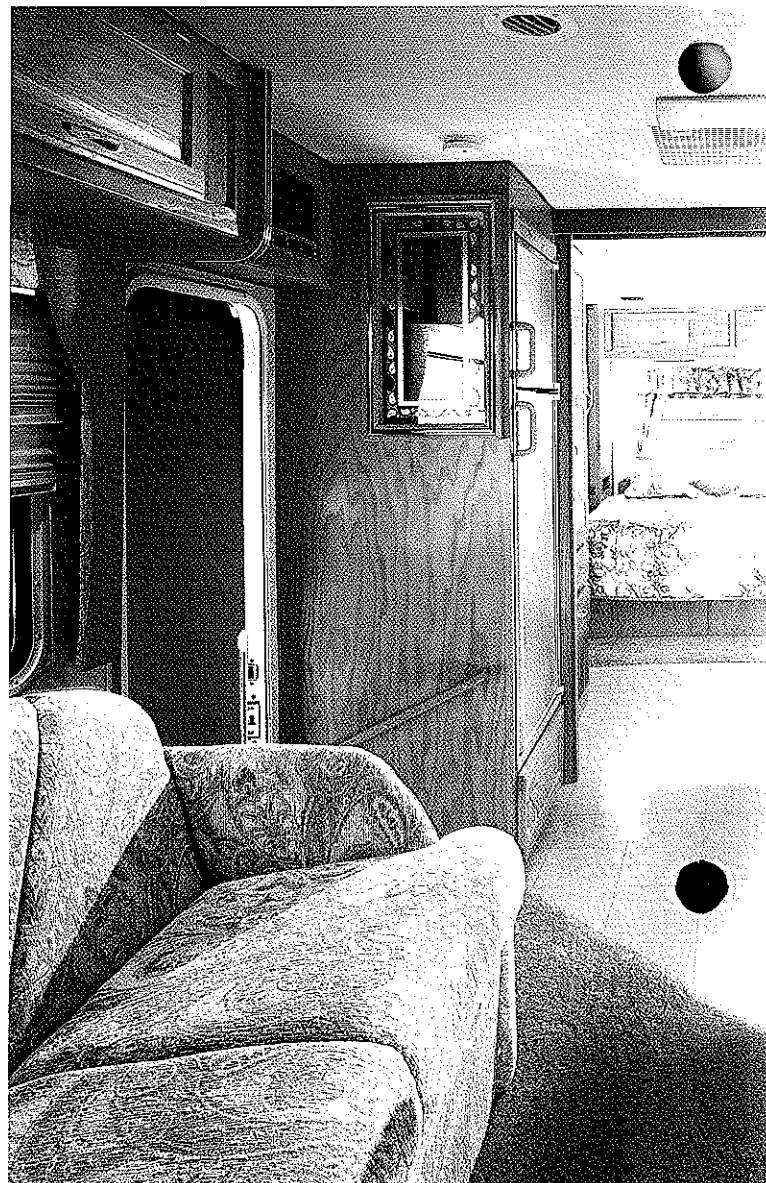


W6301

The all-new Ultra Supreme by Gulf Stream is your best choice for high-end luxury at an affordable price. With front and rear molded fiberglass caps, sleek new exterior graphics, ducted roof air conditioning, full pass-through basement storage, and an array of wide-body floorplans, the Ultra Supreme offers just about every luxury amenity you'd ever want in a Class C mini-motorhome



With well-thought out floorplan designs featuring solid oak raised-panel cabinet doors, cabinet stiles, real oak paneling and brand-name appliances - the interior of the Ultra Supreme exudes class. Contemporary decors are designer-coordinated and feature only the finest durable fabrics and carpeting for an overall look of quality and craftsmanship



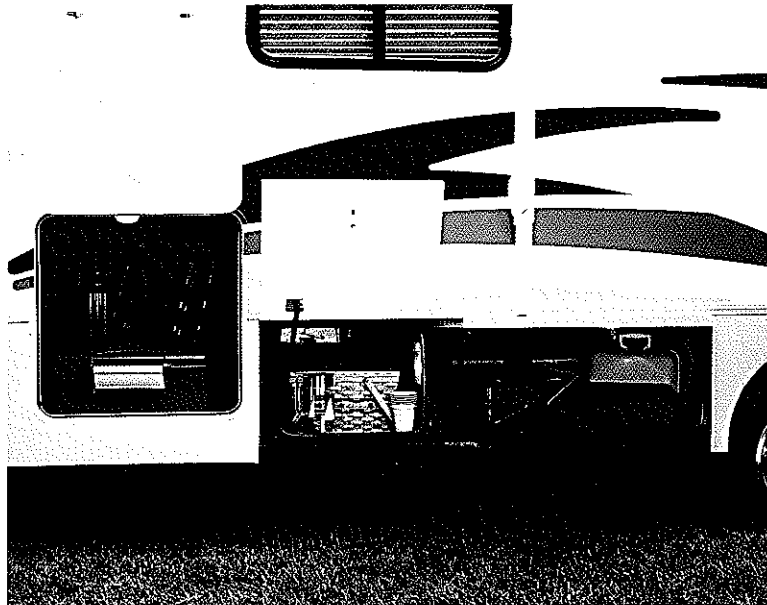
W6301



W6301

The bedroom in the Supreme offers a nice, quiet retreat with rich oak cabinetry, large wardrobe and overhead storage, designer window treatments with matching bedspread and pillow covers, and a beautiful hand-crafted wall vanity for a tremendous amount of added countertop and storage space

This particular floorplan features an open bath concept, highlighted by an enormous neo-angle shower with a skylight overhead to flood the room with natural light



W6301

When it comes to exterior storage space, the Supreme offers the ultimate in steel-framed, pass-through sub-floor storage compartments. These storage areas are formed out of galvanized steel, finished with indoor/outdoor carpeting, and offer electrical outlets and convenience lighting.

# Supreme

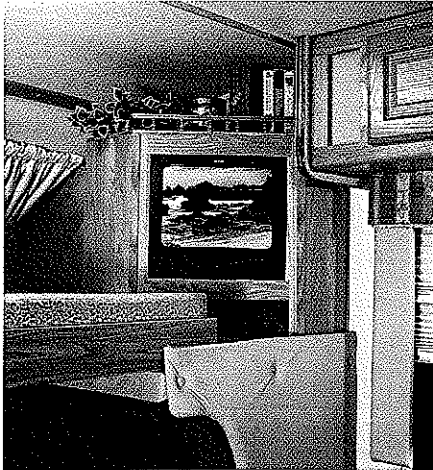
The cockpit area of the Supreme is designed for both elegant eye appeal and practicality with solid oak accents, padded edging and designer-coordinated window treatments, shown here with an optional entertainment center.

You'll appreciate the stylish dinette, designed for improved looks and comfortable seating.



W6301

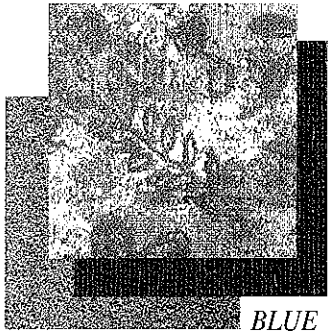
# ULTRA CLASS C



Check out Gulf Stream's unique optional side cabover entertainment center option - another innovation designed to offer you more for your money! Choose the full overhead entertainment center (shown on the right) for extra storage and a 19" color television with remote



## Interior Colors



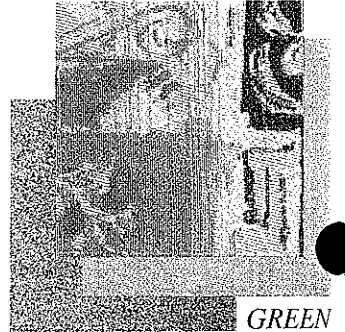
BLUE



PLUM



IAN



GREEN

Gulf Stream uses durable stain and fire resistant fabrics and carpets to ensure that your coach will keep it's good looks for years to come! Choose from a selection of four different exciting and fresh interior color decor packages, designed specifically to accent the interior of your coach



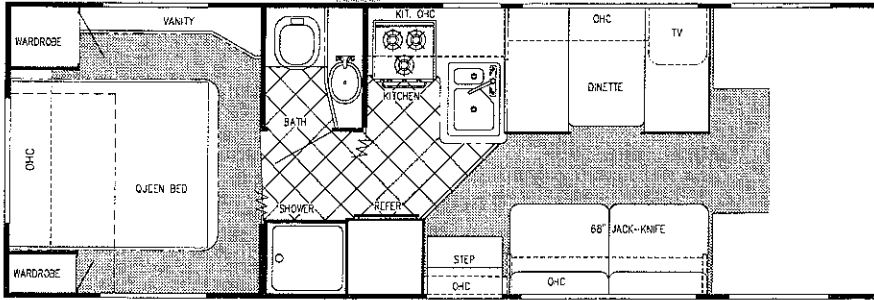
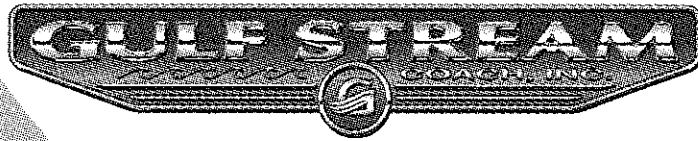
## Sport Series

The Ultra Sport Series by Gulf Stream is your best choice for affordable Class C mini-motorhome living. With smooth fiberglass laminated, aluminum-framed sidewalls, an aluminum-framed laminated rubber roof, and a steel-framed laminated coach floor system with metal underbelly, the Sport is built to last. Inside - you'll appreciate the warm oak interiors and luxurious fabrics, all at a price that will fit within your family budget!

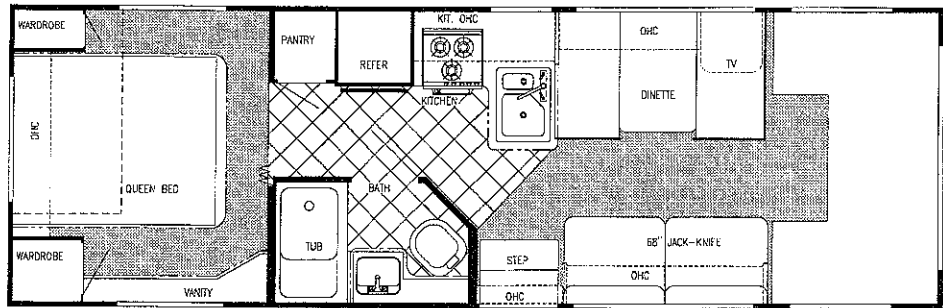


W6280

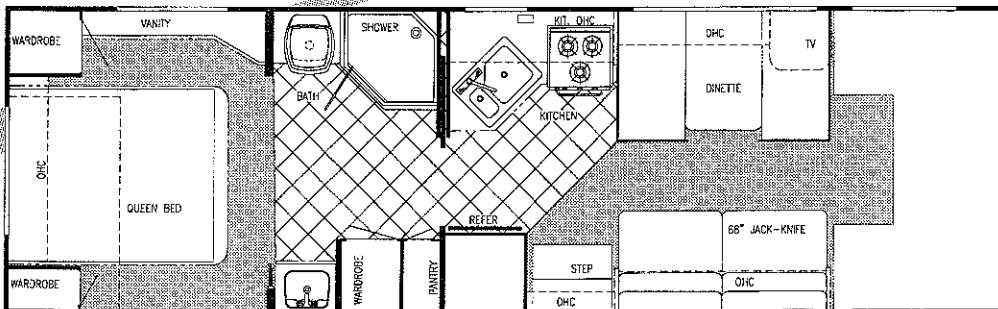
# ULTRA SUPREME 2000



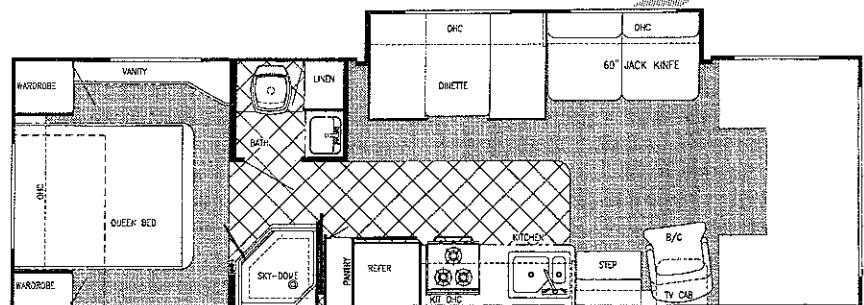
**Model W6272R** (Twin Beds or Bunks Opt.)



**Model W6293R** (Twin Beds or Bunks Opt.)



**Model W6301R** (Twin Beds or Bunks Opt.)



**Model W6316R** (Twin Beds or Bunks Opt.)

# SUPREME

## Interior & Decor

- 6' - 5" Interior Height
- Natural Oak Stile Constructed Cabinetry
- Natural Oak, Raised Panel Mortise and Tenon Cabinet Doors (in galley)
- Privacy Curtain Cab
- Interior Decorative Clock
- Queen Size Bed, Cab-Over
- 2-Way Driver & Passenger Seats
- Deluxe Carpet W/Pad Throughout
- Coordinated Bedspread & Shams
- Power Vent in Commode
- Generous Overhead Storage
- Mini Blinds in Kitchen
- Soft Touch Interior Ceiling Fabric
- Designer Interior Window Treatments
- Oak Drink Tray (Ford)
- Sink Cover
- Oak Knife Holder
- Slide Out Cabover Bunk
- Acrylic Entry Door Assist Handle

## Appliances

- 3-Burner Range w/Oven
- Range Hood w/Monitor Panel
- Carbon Monoxide Detector
- Microwave
- 6 Gal Quick-Recovery Water Heater
- 13,500 BTU Ducted Roof A/C
- 30,000 BTU Furnace (25M - 6272)

## Exterior & Construction

- 101" Wide-Body Design
- High Quality Clear Coated Paint on Skirt
- Welded Aluminum Cage Construction
- High Density Block Foam Insulation in the Walls, Roof & Floor
- Super-Slick Laminated Fiberglass Exterior
- Radiused Laminated Rubber Roof w/ Heliarc-Welded Aluminum Rafters
- Exclusive Molded Roof Brick Insulation
- Tubular Steel Floor
- Laminated Floor w/Metal Underbelly
- Foamed, Sealed & Undercoated Subfloor
- Fiberglass Front and Rear Caps & Wings
- Full Basement Storage
- Carpeted Basement Storage
- Distinctive Exterior Graphics
- Expansive Radius Slider Windows
- Front Cab-Over Window
- Outside Grab Handle
- Porch Light
- Dead-Bolt on Entry Door
- Rubber Entry Step
- Spare Tire and Wheel
- Fully-Enclosed Black, Grey and Fresh Water Tanks

## Popular Options

- Outside Entertainment Center
- Sliding Dual Battery Tray
- Battery Disconnects
- Heated and Remote Mirrors
- Cabover Entertainment Center (N/A 6293)
- CD Player
- Side Cabover Entertainment Center
- Back-Up Monitor

## Electrical Systems

- Easy-Store 30' Elect Power Cord
- Lighted Basement Storage
- Double Overhead Reading Lights
- 110V Receptacles
- Generator prep
- Ground Fault Circuit Interrupter
- Outside Receptacle
- Auxiliary Battery
- Electronic Converter w/Charger (45 Amp)
- AM/FM Cassette w/4 Speakers
- Monitor Panel

## Chassis

- 6 8L, V-10 Engine
- E-40 Super Duty Chassis
- 4 Speed Auto Overdrive Trans
- Tilt Wheel Steering
- Power Brakes & Steering
- Deluxe Heated & Remote Mirrors (Opt )
- Power Locks and Windows
- Radial Tires
- Dual Air Bags
- Cruise Control
- Gas Tank - Approx 55 Gal.
- FORD Turbo Diesel Chassis (Opt , N/A 6293, 6316)

## Bath & Water

- Demand Water System
- City Water Hook-Up
- Tub/Shower Combination
- Bath Convenience Accessories
- Lavatory w/Base Cabinet Storage
- Water Bypass Valve

GAS MODELS	W6272R	W6293R	W6301R	W6316R
FORD CHASSIS:	V-10	V-10	V-10	V-10
Wheelbase	186"	208"	208"	208"
GVWR (lbs.)	14,050	14,050	14,050	14,050
*Exterior Length	28'-3"	29'-5"	30'-8"	31'-5"
*Exterior Height with A/C	11'-3"	11'-3"	11'-3"	11'-3"
*FreshWater Tank (Gal.)	34	34	34	34
*Grey Holding Tank (Gal.)	36	36	36	36
*Black Holding Tank (Gal.)	36	36	36	36
LP Gas Tank (lbs.)	62lb.	62lb.	62lb.	62lb.
*Basement Storage	89.9 cu. ft.	89.5 cu. ft.	106.6 cu. ft.	44 cu. ft.

\* Approximate and subject to change without notice

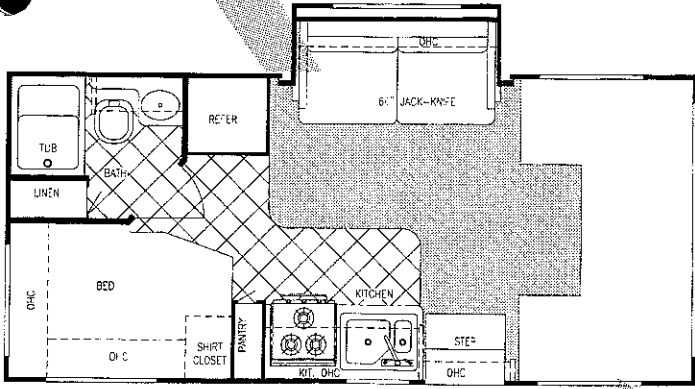
For further information, contact your local dealer or Gulf Stream Gulf Stream Coach, Inc. reserves the right to make changes in prices, colors, materials, components and specifications and to discontinue models at any time without notice or obligation. Gulf Stream Coach, Inc. assumes no responsibility for any error in type or print reproduction of specifications or floorplans in this brochure TP 50M 7/99



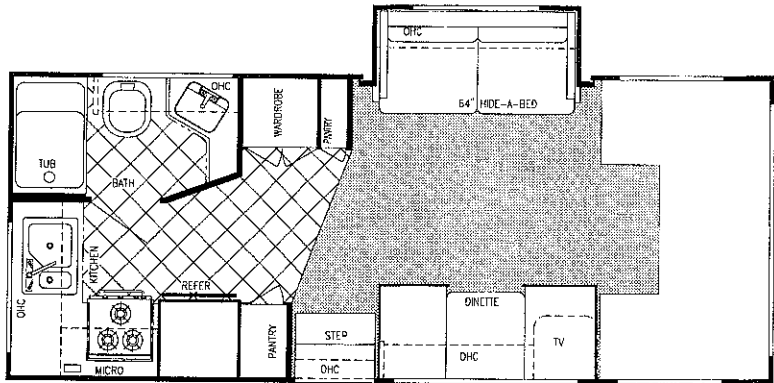
P.O. Box 1005 • Nappanee, IN 46550

**1-800-289-8787, Ext. 3288**  
**www.gulfstreamcoach.com**

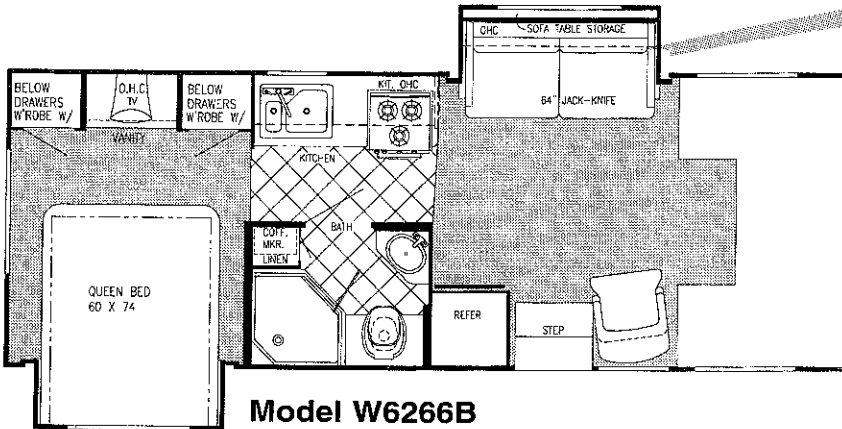
# LIMITED EDITION 2000



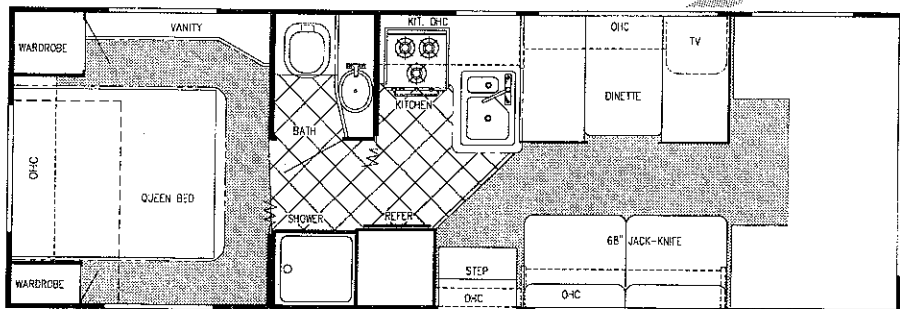
**Model W6212B**



**Model W6236B**

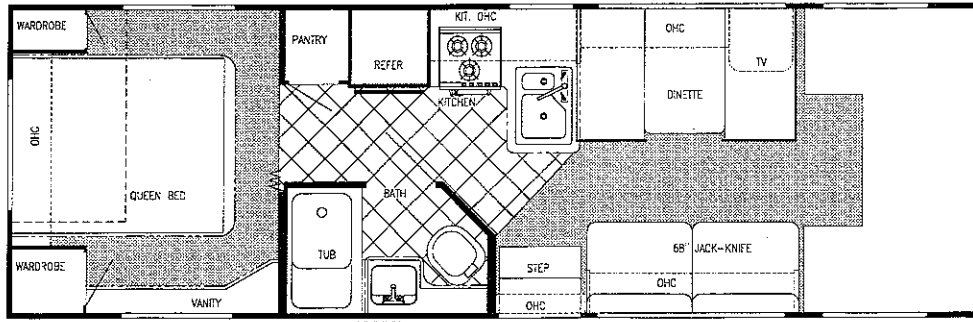


**Model W6266B**

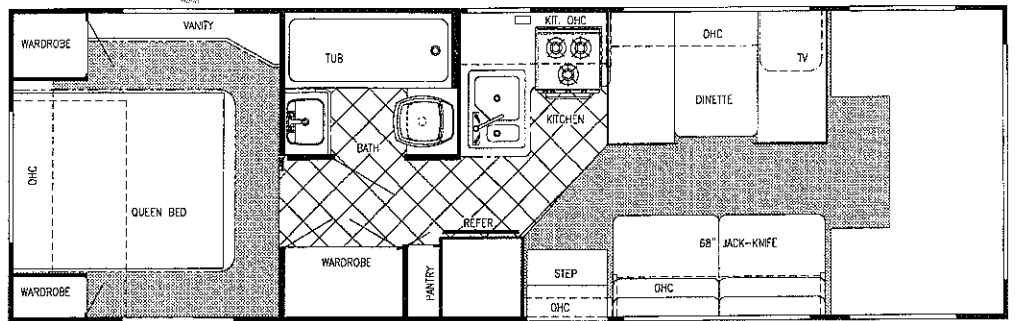


**Model W6272B (Twin Beds or Bunks Opt.)**

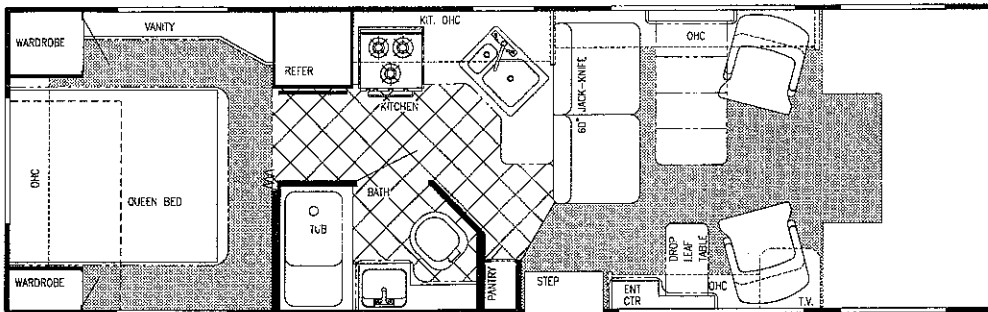
et  
es  
or  
or  
g-  
a  
el  
ta  
d,  
m  
el  
pr  
h  
g  
te  
ra  
p-  
r-  
st  
e



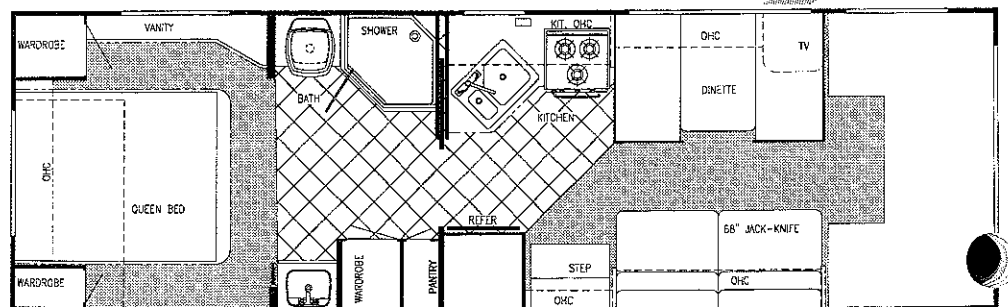
**Model W6293B** (Twin Beds or Bunks Opt.)



**Model W6294B** (Twin Beds or Bunks Opt.)



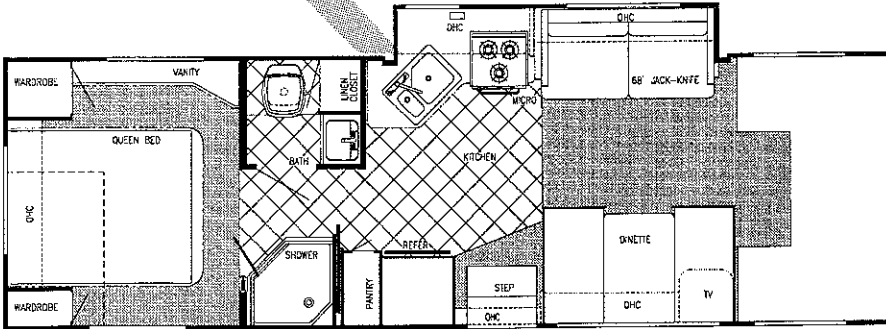
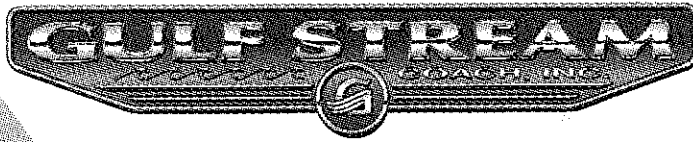
**Model W6300B** (Twin Beds or Bunks Opt.)



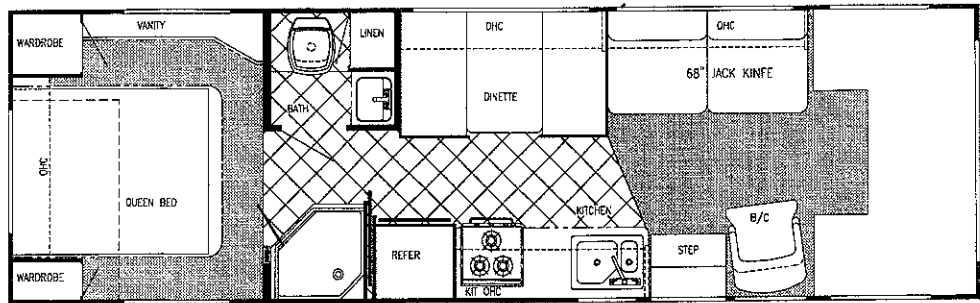
**Model W6301B** (Twin Beds or Bunks Opt.)



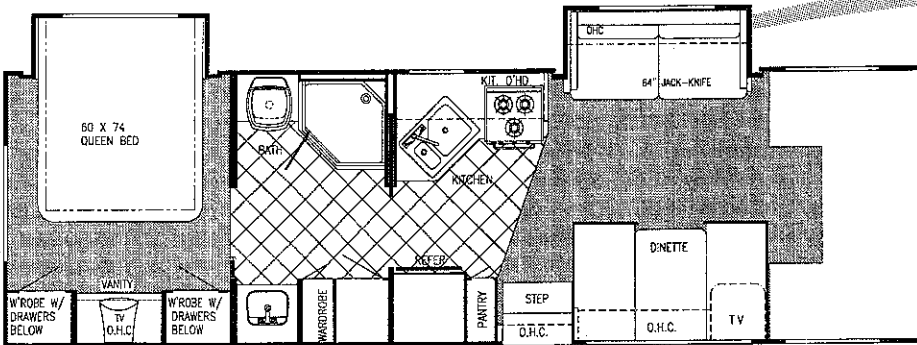
# LIMITED EDITION 2000



**Model W6313B** (Twin Beds or Bunks Opt.)



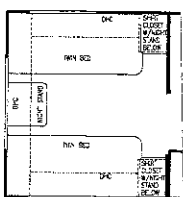
**Model W6315B** (Twin Beds or Bunks Opt.)



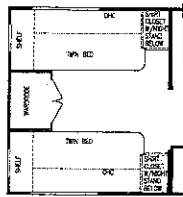
**Model W6302B**

## OPTIONS

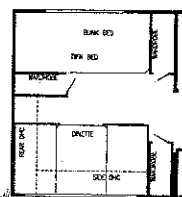
**Twin Beds (Nightstand)**



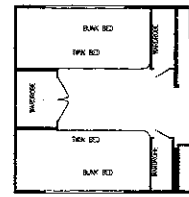
**Twin Beds (Wardrobe)**



**Bunk Dinette**



**Bunk Beds**



# LIMITED EDITION

## Standard Specifications

### Interior & Decor

- Approx 6'-5" Interior Height (most models)
- Stile Constructed Cabinetry
- Natural Oak Frame Raised Panel Cabinet Doors (in galley)
- Privacy Curtain Cab
- Deluxe Carpet w/Pad
- Generous Overhead Storage
- 2-Way Driver & Passenger Seat
- Coordinated Bedspreads & Shams (most models)
- Decorator Curtains & Day/Night Shades w/Valances
- Interior Decorative Clock
- Rubber Entry Step
- Queen Size Bed, Cab-Over
- Power Vent in Commode
- Tub Surround
- Mini Blinds Kitchen
- Hydraulic-Operated Glide Out Room (slide out models)

### Electrical Systems

- Easy Store 30' Elect. Power Cord
- Double Overhead Reading Lights
- 110-Volt Receptacles
- Ground Fault Circuit Interrupter
- Outside Receptacle
- TV Antenna w/Amp & Boost
- Auxiliary Battery
- Electronic Converter w/Charger (45 Amp)
- Generator Prep
- AM/FM Cassette w/4 Speakers
- Monitor Panel

### Exterior & Construction

- 101" Wide-Body Design
- Welded Aluminum Cage Construction
- 4-Ply Laminated Walls, Roof & Floor
- Smooth Fiberglass Exterior
- Radiused Laminated Rubber Roof w/ Heliarc-Welded Aluminum Rafters, and Exclusive Molded Roof Brick Insulation w/Bubble Wrap Duct System (N/A 6212)
- Hydraulic Pump Override System
- Tubular Steel Floor
- Laminated Floor w/ Metal Underbelly
- Foamed, Sealed & Undercoated
- Full Basement Storage (most models)
- Distinctive Exterior Graphics
- Expansive Radius Slider Windows
- Hose Storage Bumper
- Front Cab-Over Window
- Outside Grab Handle
- Chrome Bumper Cover (most models)
- Aluminum Running Boards
- Dead Bolt on Entry door
- Spare Tire and Carrier
- Roof Rack & Ladder
- Bumper Jack (Opt. most models)

### Bath & Wetbar

- Demand Water System
- City Water Hook-Up
- Tub/Shower Combo
- Lavatory w/Base Cabinet Storage
- Bath Convenience Accessories
- Water Bypass Valve
- Skydome in Shower (most models)

### Chassis

- 6 8L, V-10 Engine
- E-30 Chassis (Up to 22')
- E-40 Super Duty Chassis (23' & above)
- 4 Speed Auto. Overdrive Trans
- Tilt Wheel Steering
- Power Brakes & Steering
- Deluxe Exterior Mirrors
- Radial Tires
- Cruise Control
- Gas Tank - Approx 35 Gal (21')  
Approx 55 Gal (24' & up)
- FORD Turbo Diesel Chassis (Opt)
- Dual Air Bags

### Appliances

- 3-Burner Range w/Oven
- Large 2-Way Dbl. Door Refer
- Microwave Installed
- 6 Gal. Elect Ign Water Heater
- 25,000 BTU Furnace - most models  
(30,000 BTU - 30' & above)
- 13,500 BTU Roof Air
- Large LP Gas Tank

### Popular Options

- Outside Entertainment Center
- Sliding Battery Tray
- Battery Disconnects
- Heated and Remote Mirrors
- Cabover Entertainment Center
- Side Cabover Entertainment Center
- Slide-Out Room Awning
- Chevrolet Chassis (6212, 6236)
- Solar Charge 3 Speed Fantastic Fan In Bedroom

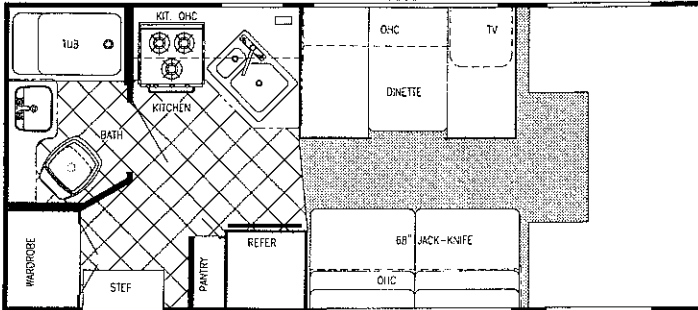
GAS MODELS	W6212B	W6236B	W6266B	W6272B	W6293B	W6294B	W6300B	W6301B	W6302B	W6313B	W6315B
FORD CHASSIS	V-10	V-10	V-10	V-10	V-10	V-10	V-10	V-10	V-10	V-10	V-10
Wheelbase	156"	176"	176"	186"	208"	208"	208"	208"	208"	208"	208"
GVWR (lbs.)	11,500	14,050	14,050	14,050	14,050	14,050	14,050	14,050	14,050	14,050	14,050
*Exterior Length	21'-11"	24'-2"	26'-11"	28'-3"	29'-5"	30'-1"	30'-5"	30'-8"	31'-4"	30'-8"	30'-11"
*Exterior Height with A/C	11'-1"	11'-1"	11'-3"	11'-3"	11'-3"	11'-3"	11'-3"	11'-3"	11'-3"	11'-3"	11'-3"
*FreshWater Tank (Gal)	32	32	34	34	34	34	34	34	34	34	34
*Grey Holding Tank (Gal.)	30	30	36	36	36	36	36	36	36	36	36
*Black Holding Tank (Gal.)	30	30	36	36	36	36	36	36	36	36	36
LP Gas Tank (lbs.)	62lb	62lb	62lb	62lb	62lb	62lb	62lb	62lb	62lb	62lb	62lb
*Basement Storage	N/A	N/A	N/A	78.6	89.5	104	102	104.6	52.2	90.4	99.5

\* Approximate in cubic feet and subject to change without notice.

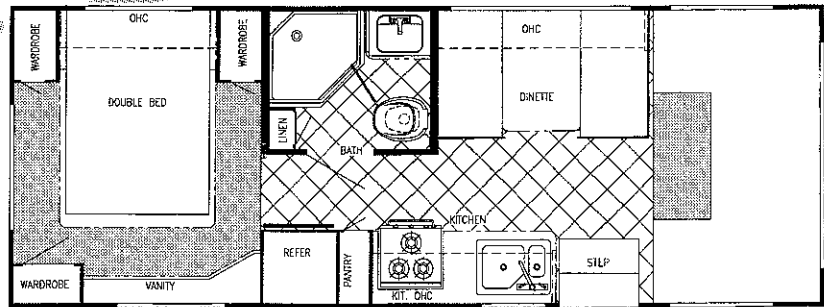
For further information, contact your local dealer or Gulf Stream. Gulf Stream Coach, Inc. reserves the right to make changes in prices, colors, materials, components and specifications and to discontinue models at any time without notice or obligation. Gulf Stream Coach, Inc. assumes no responsibility for any error in type or print reproduction of specifications or floorplans in this brochure.

TP 50M 7/99

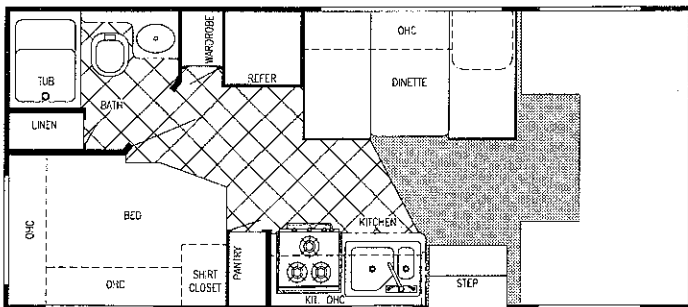
# ULTRA SPORT 2000



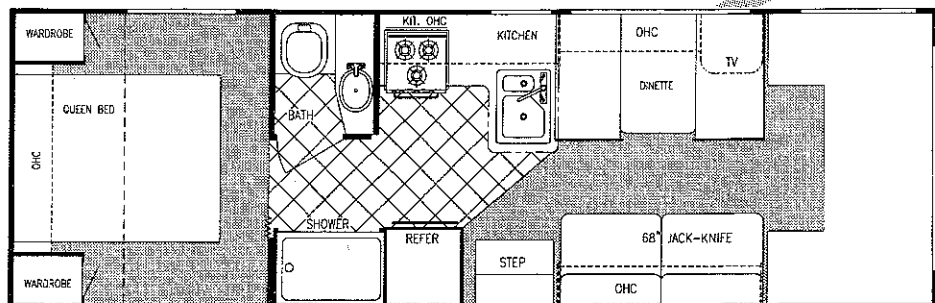
**Model W6211T**



**Model W6253T**



**Model W6210T**



**Model W6280T**

# ULTRA SPORT

## Standard Specifications

### Interior & Decor

- 6'-8" Interior Height (most models)
- Stile Constructed Cabinetry
- Privacy Curtain Cab
- Deluxe Carpet w/Pad Throughout
- Generous Overhead Storage
- 2-Way Driver & Passenger Seat
- Coordinated Bedspreads & Shams (Opt most models)
- Decorator Curtains & Shades w/Valances
- Queen Size Bed, Cab-Over
- Power Vent in Commode

### Electrical Systems

- Easy Store 30' Elect Power Cord
- Overhead Reading Lights
- 110-Volt Receptacles
- Ground Fault Circuit Interrupter
- Outside Receptacle
- TV Antenna w/Amp & Boost
- Auxiliary Battery
- Electronic Converter w/Charger (45 Amp)
- Generator Prep
- AM/FM Cassette w/4 Speakers

Gulf Stream Coach, Inc. reserves the right to make changes in prices, colors, materials, components and specifications and to discontinue models at any time without notice or obligation. Gulf Stream Coach, Inc. assumes no responsibility for any error in type or print reproduction of specifications or floorplans in this brochure  
TP 50M 7/99

### Exterior & Construction

- 101" Wide-Body Design
- Smooth Fiberglass Exterior
- Rear Ladder (Opt.)
- Chrome Bumper Cover
- Deluxe Awning (Opt)
- Welded Aluminum Cage Construction
- 4-Ply Laminated Walls, Roof & Floor
- Laminated Rubber Roof w/ Heliarc-Welded Aluminum Rafters
- Tubular Steel Floor
- Laminated Floor w/ Metal Underbelly
- Foamed, Sealed & Undercoated
- Generous Above-Floor Exterior Storage
- Generous Exterior Basement Storage
- Distinctive Exterior Graphics
- Expansive Radius Slider Windows
- Hose Storage Bumper
- Self Storing Entry Step
- Front Cab-Over Window (Opt.)
- Outside Grab Handle
- Porch Light
- Dead Bolt on Entry door
- Spare Tire and Carrier
- Mag-Look Wheel Covers

### Bath & Water

- Demand Water System
- City Water Hook-Up
- Tub/Shower Combo
- Lavatory w/Base Cabinet Storage
- Water Bypass Valve

### Chevy Chassis

- 7.4 L, V-8 Engine
- 4 Speed Auto. Overdrive Trans
- Tilt Wheel Steering
- Power Brakes & Steering
- Radial Tires
- Cruise Control
- Gas Tank -  
Approx 35 Gal (6210 & 6211)  
Approx 60 Gal (6253 & 6280)

### Appliances

- 3-Burner Range Top
- Power Range Hood
- Large 2-Way Refrigerator
- Microwave (Opt)
- 6 Gal. Elect Ign. Water Heater
- 25,000 BTU Furnace
- 13,500 BTU Roof Air
- Large LP Gas Tank
- LP Leak Detector
- Carbon Monoxide Detector
- Monitor Panel

### Popular Options

- Ford Chassis
- LP Gas Oven
- Battery Disconnect
- Tub Surround
- Emergency Start Switch
- Aluminum Running Boards

GAS MODELS	W6210T	W6211T	W6253T	W6280T
CHEVY CHASSIS:	454 Vortec	454 Vortec	454 Vortec	454 Vortec
Wheelbase	139"	139"	177"	197"
GVWR (lbs.)	12,300	12,300	12,300	12,300
*Exterior Length	22'-4"	22'-4"	26'-11"	29'-3"
*Exterior Height with A/C	11'-1"	11'-1"	11'-1"	11'-1"
*FreshWater Tank (Gal.)	32	22	34	34
*Grey Holding Tank (Gal.)	30	30	36	36
*Black Holding Tank (Gal.)	30	30	36	36
LP Gas Tank (lbs.)	48 lb.	48 lb.	48 lb.	48 lb.

\* Approximate and subject to change without notice.



P.O. Box 1005 • Nappanee, IN 46550

**1-800-289-8787, Ext. 3288**  
**www.gulfstreamcoach.com**

# GULF STREAM'S NEW GENERATION CRADLE OF STRENGTH

## Supreme & Limited Edition

(23' and above)

1 Seamless Rubber Roof For Greater Energy Efficiency and Dependability.

2 Luan Decking for Additional Strength

3 Molded, High Density EPS (Expanded PolyStyrene) Roof Brick Insulation - Provides Consistent Insulative Value As Well As Superior Dimensional Rigidity.

4 One-Piece Formed Aluminum Air Conditioning Duct, Completely Surrounded By EPS Insulation

5 Bubble-Wrapped Foil Insulation Provides Superior Insulation and Helps Prevent Condensation

6 Rugged Welded Tubular Aluminum Roof Framing

7 Rugged Heavy-Gauge Tubular Aluminum, Fixture Welded to Form the Sidewall Framing

8 High-Density EPS Insulation Provides Superior Laminating and Bonding Characteristics and Insures Greater Energy Efficiency.

9 Interior Wall Panels Securely Laminated to Sidewall Framing

10 "Mende" Fiberglass Exterior Vacuum-bond Laminated to Sidewall Framing for Lasting Beauty and Durability. (Super Slick - Supreme)

11 High-Quality Stain-Resistant Carpeting Available in Designer Coordinated Colors.

12 Extra-Thick Padding Under Carpet Provides Extra Comfort and Increases Carpet Durability

13 Seamless Structurewood Floor Decking Laminated to Steel Floor Structure Assures a Quiet, Long-Lasting, Rigid Floor and comes with a 10-Year Warranty.

14 Heavy-Gauge Tubular Steel Framing, Fixture Welded for Extra Strength and Stability

15 Heavy-Gauge Tubular Steel Framed, Fixture Welded Floor Truss System Provides the Strongest Class C Foundation in the Industry

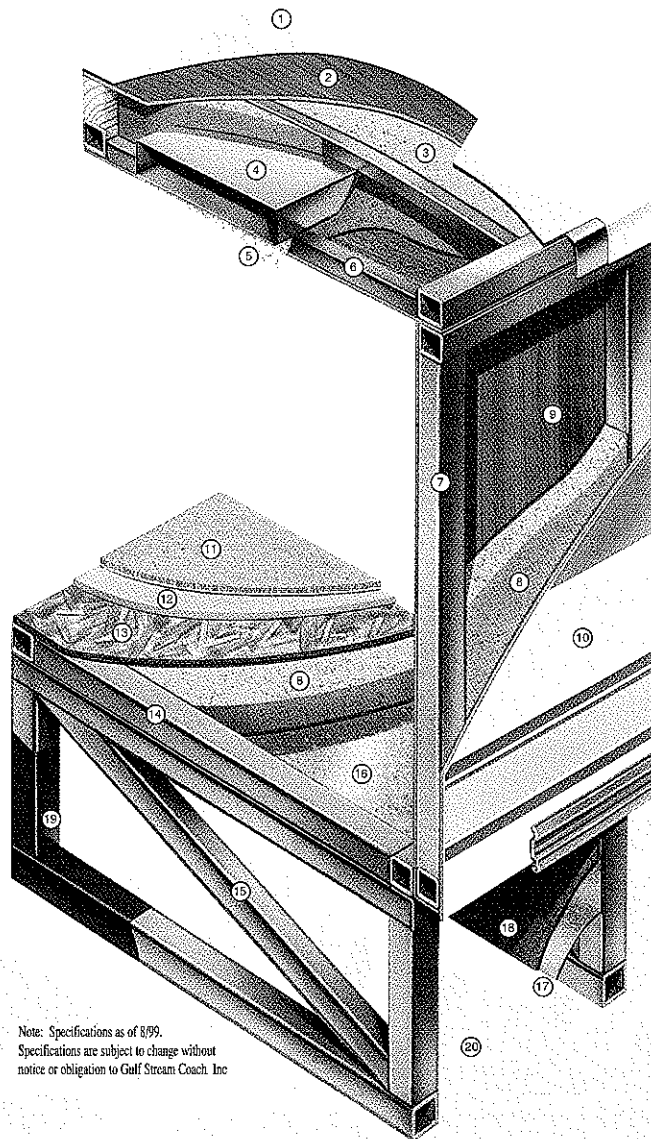
16 Seamless Layer of Galvanized Steel Securely Laminated to the Steel Floor Framing

17 Galvanized Steel Used to Form Each Storage & Holding Compartment

18 Durable All-Weather Carpeting Completes Each Accessible Storage Compartment, Providing Extra Protection for Luggage and Valuables

19 Rust-Prohibitive Paint Coating Applied to All Steel Framing Assures Corrosion and Rust Protection

20 The Industry's Strongest, Most Spacious Exterior Storage Compartments



Note: Specifications as of 8/99.  
Specifications are subject to change without notice or obligation to Gulf Stream Coach, Inc.



# GULF STREAM - BUILT TO LAST!

# ULTRA LIMITED EDITION

The Ultra Limited Edition Class C by Gulf Stream offers a wide variety of floorplans, ranging in length from 20' to 31', including a number of slide-out models. Gulf Stream was the first to offer slide-outs in Class C's and continues to lead the way with an exciting array of slide models including this unique 23' coach with a slide-out shown here. Yes! While it may not seem possible, this coach is only 23' long!

Solid oak raised-panel cabinet doors and fresh new designer-coordinated decors featuring only the finest durable fabrics and carpeting give the Limited Edition a look of unmatched elegance

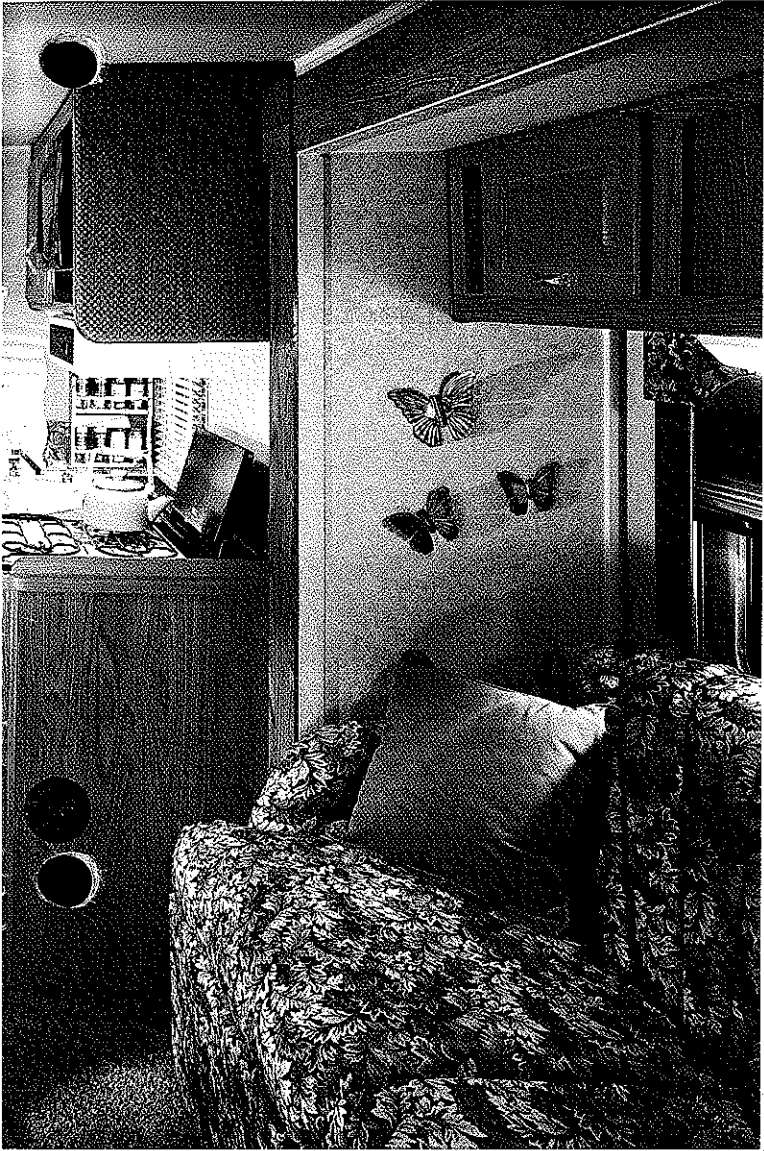


With a designer awning, microwave oven, double-door refrigerator and 13,500 BTU roof air conditioner all standard, the Ultra Limited Edition comes equipped with more standards and features than almost any coach on the market. All this at a price that is sure to please even the most discriminating buyer you!

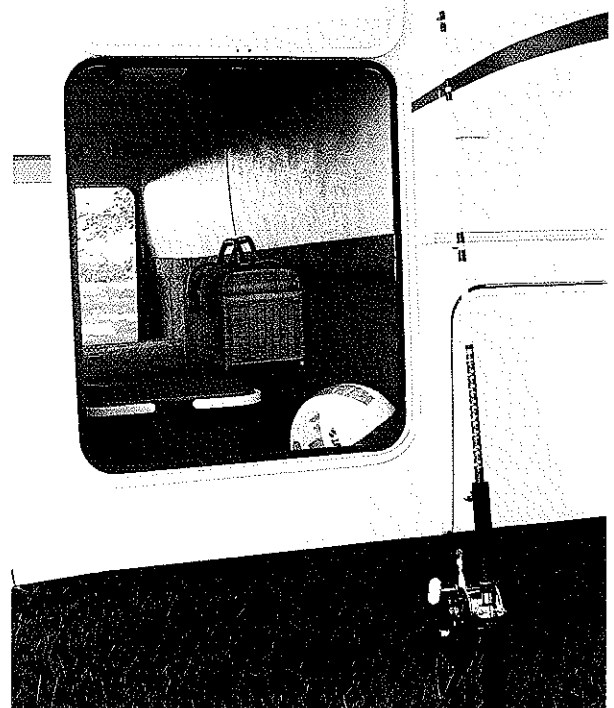
With new flowing exterior graphics, ducted roof air conditioning, full pass-through basement storage, and wide-body floorplans available, the Limited Edition mini-motorhome continues to be Gulf Stream's top seller in the Class C market. Tubular steel sub-floor trussing and floor framing, combined with aluminum-framed, vacuum-bond laminated sidewalls and roof make the Limited Edition one of the best constructed



Gulf Stream - the innovator of the Class C slide-out room, has once again broken new ground with its opposable, double slide-out coach featuring a roomy bedroom slide.



W6302



W6294

The Limited Edition offers the ultimate in steel-framed, pass-through sub-floor storage compartments, including this extra-large "cavernous" storage located at the rear of this model

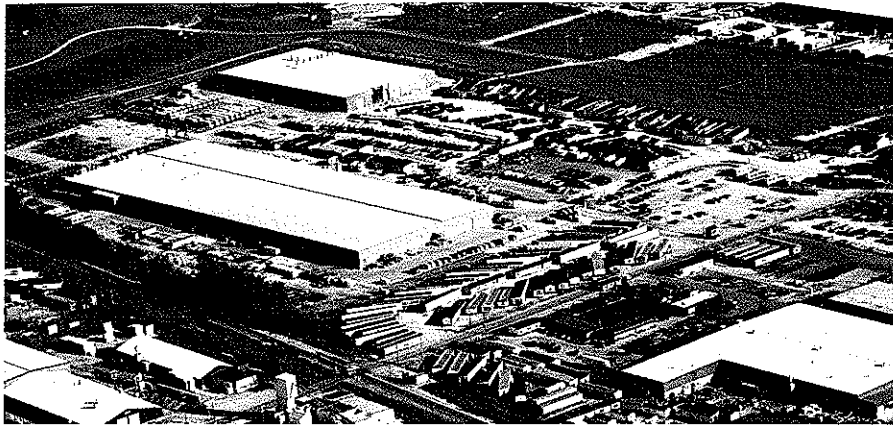
# Limited Edition

This Limited Edition bedroom slide-out model features rich oak cabinetry, large dual wardrobes, a convenient mirrored vanity area, two sets of roomy drawers, designer window treatments with matching bedspread and pillow covers, providing the most spacious, livable bedroom on the market!



W6226

# ENJOY THE BENEFITS OF DEALING WITH A TOP FULL-LINE RV MANUFACTURER!



Gulf Stream Coach, Inc., has been a family owned corporation since its inception in 1983. In just 15 years, Gulf Stream has grown to be one of the top full-line manufacturers of recreational vehicles in the world. With manufacturing facilities encompassing over 400 acres, including an employee country club with a nine hole golf course and swimming pool, Gulf Stream employs over 1,200 men and women producing a variety of recreational vehicles including Class A's, Class C's, travel trailers, fifth wheels and van conversions.



## EXCLUSIVE 24 MONTH WARRANTY!

Gulf Stream Coach, Inc., is proud to offer a 24 month or 24,000 miles warranty on all major \*structural components. In addition, major component manufacturers are providing 2 year warranties on their products installed in Gulf Stream units, such as refrigerator, television, furnace, water heater, air conditioner, awning, range, microwave, etc. See the official written Gulf Stream Coach, Inc. warranty for details.

## GULF STREAM INNOVATION! Imitation is the Sincerest Form of Flattery...

Gulf Stream Coach, Inc., was the innovator of slide-out rooms in Class C motorhomes - but that was only one of the many innovations you've come to expect from Gulf Stream. Gulf Stream also led the way with:

**The First Wide Body Class C!**

**The First Ducted Roof Air Class C!**

**The First Full Basement Class C!**

**The First Side Cabover Entertainment Center!**

**The First Kitchen Slide-Out Class C!**

**The First Double Slide-Out Class C!**

**The First Small Coach Slide Class C!**

For more information, contact your local dealer or Gulf Stream. Gulf Stream Coach, Inc., reserves the right to make changes in colors, materials, components and specifications and to discontinue models at any time without notice or obligation. Gulf Stream Coach, Inc., assumes no responsibility for any error in type or print reproduction of specifications in this brochure. Photographs may show equipment or items that are optional and are not included in the purchase price of the coach. Test drive and review a current model at your nearest dealer.

\* For the purpose this warranty, "structural components" shall be limited to the sidewalls, front and back walls, roof and floor. SCG 50M 8/99



P.O. Box 1005 • Nappanee, IN 46550

For more information, call:  
1-800-289-8787, ext. 3288

Visit our Web Site at:  
[www.GULFSTREAMCOACH.com](http://www.GULFSTREAMCOACH.com)